

DATAHABITAT FOR MICROSOFT GREAT PLAINS EDITION

DataHabitat offers you insight into your business data by providing OLAP and reporting capabilities previously not available with Microsoft Great Plains Edition. DataHabitat enables you to visually analyze your business data, track key performance indicators, and distribute information throughout your organization, while providing you with an optimized platform for management and operational reporting.

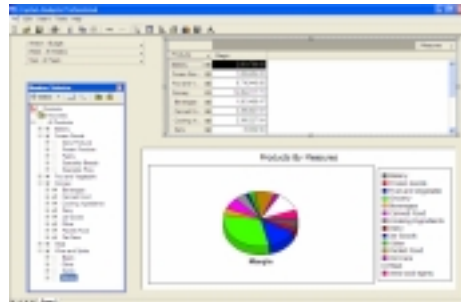
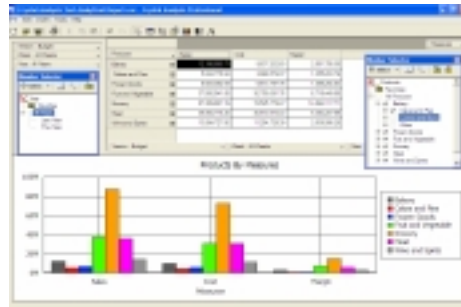
Immediately available upon installation, DataHabitat provides access to your business data through a number of pre-defined reports, objects, key performance indicators, queries, and multi-dimensional cubes.

ADAPTABLE MULTI-DIMENSIONAL CUBES

DataHabitat comes pre-packaged with 3 multi-dimensional cubes for:

- Sales Analysis
- Inventory Analysis
- Purchase Order Analysis

These cubes can be modified to include new dimensions, measures, or versions. New cubes can be easily built from scratch, allowing users to get the information they need for effective decision making. DataHabitat is completely customizable and requires no programming or programming knowledge. With DataHabitat, end users can view their data in Microsoft SQL Server through traditional multi-dimensional OLAP tools such as Crystal Analysis.



KEY PERFORMANCE INDICATORS

DataHabitat for Microsoft Great Plains Edition comes with over 200 pre-defined Key Performance Indicators, such as:

- Sales Amount in Current Calendar Year
- % of Total Contribution Margin
- Cost of Sales in Prior Calendar Year To Date
- % Change in Sales from Prior to Current Calendar Year
- Inventory Turns

New indicators can be easily created and added to the library of existing metrics, extending the distribution of information throughout the organization.

ADAPTABILITY

DataHabitat comes packaged with Microsoft Great Plains Edition's General Ledger, Payables Management, Receivables Management, Sales Order Processing, Purchase Order Processing, and Inventory Control modules. Data from other Microsoft Great Plains Edition modules, data sources like Excel or Access, and Enterprise applications can be easily incorporated and consolidated into DataHabitat for reporting on all of your enterprise data.

DATAHABITAT FOR MICROSOFT GREAT PLAINS EDITION

QUERIES

DataHabitat supports dynamic, ad-hoc query, and analysis capabilities through its native OLAP interface. Users can drill up, down, and across their business data, add charts and graphs, and apply filters to their data to answer business questions as they occur. Views of the data or queries can be saved for future reference as either private, public, or limited to a specific group of users.

DataHabitat for Microsoft Great Plains Edition comes pre-packaged with a number of commonly requested queries for maximum out-of-the-box functionality, such as:

- Customer: Sales, Cost of Sales, and Contribution Margin in a Period
- Customer: Sales by Item and Product Line in a Period
- Customer: Top Customers by Sales Year to Date
- Salesperson: Monthly Sales in any Two Periods
- Salesperson: Sales by Customer, Item, and Product line in a Period
- Salesperson: Top Salesperson in Current Calendar Year
- Inventory: Sales by Customer and Salesperson in a Period
- Product Line: Sales Amount by Month with Trend Line
- Product Line: Participation in Sales in Current Calendar Year

OBJECTS

DataHabitat's unique object oriented solution allows you to create, modify, and re-use filters, charts, graphs, summaries, and formulas wherever needed to meet the information needs of the end-user. DataHabitat for Microsoft Great Plains Edition comes packaged with a number of commonly used objects already defined. Examples include:

Charts and Graphs:

- Sales Amount by Item
- Sales Amount by Year/Month
- Sales Amount by Salesperson

Filters:

- Current Calendar Year to Date
- Prior Calendar Year to Date
- Transaction Date Range

REPORTS

DataHabitat provides dozens of the most commonly requested reports for Sales, Customer, Item, Vendor, Product Line, and Salesperson Analysis to meet the information needs of most companies. Along with the pre-packaged reports, DataHabitat offers an optimized reporting platform for building custom reports and eliminates the pains commonly associated with reporting. A sample of the reports in DataHabitat include:

- Products Purchased by Customer in a Period
- Top Selling Product by Product Line in a Period
- Top Salesperson in Current Calendar Year
- Customer Sales, Cost, and Margin Year to Date versus Prior Year to Date